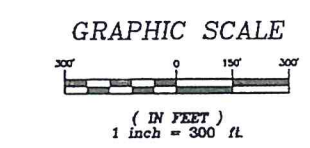
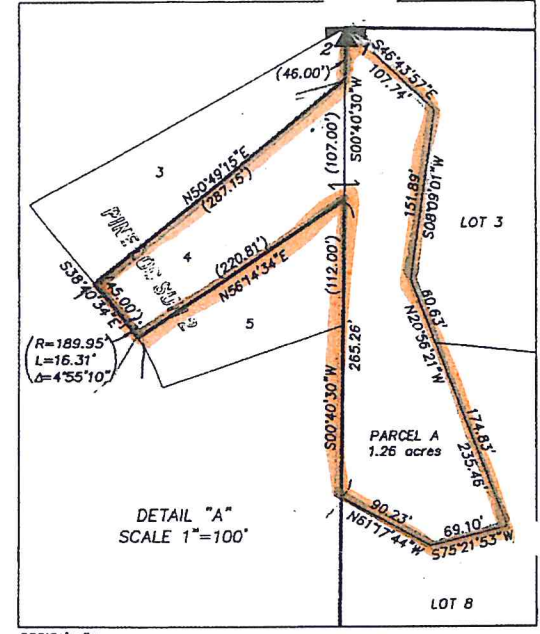
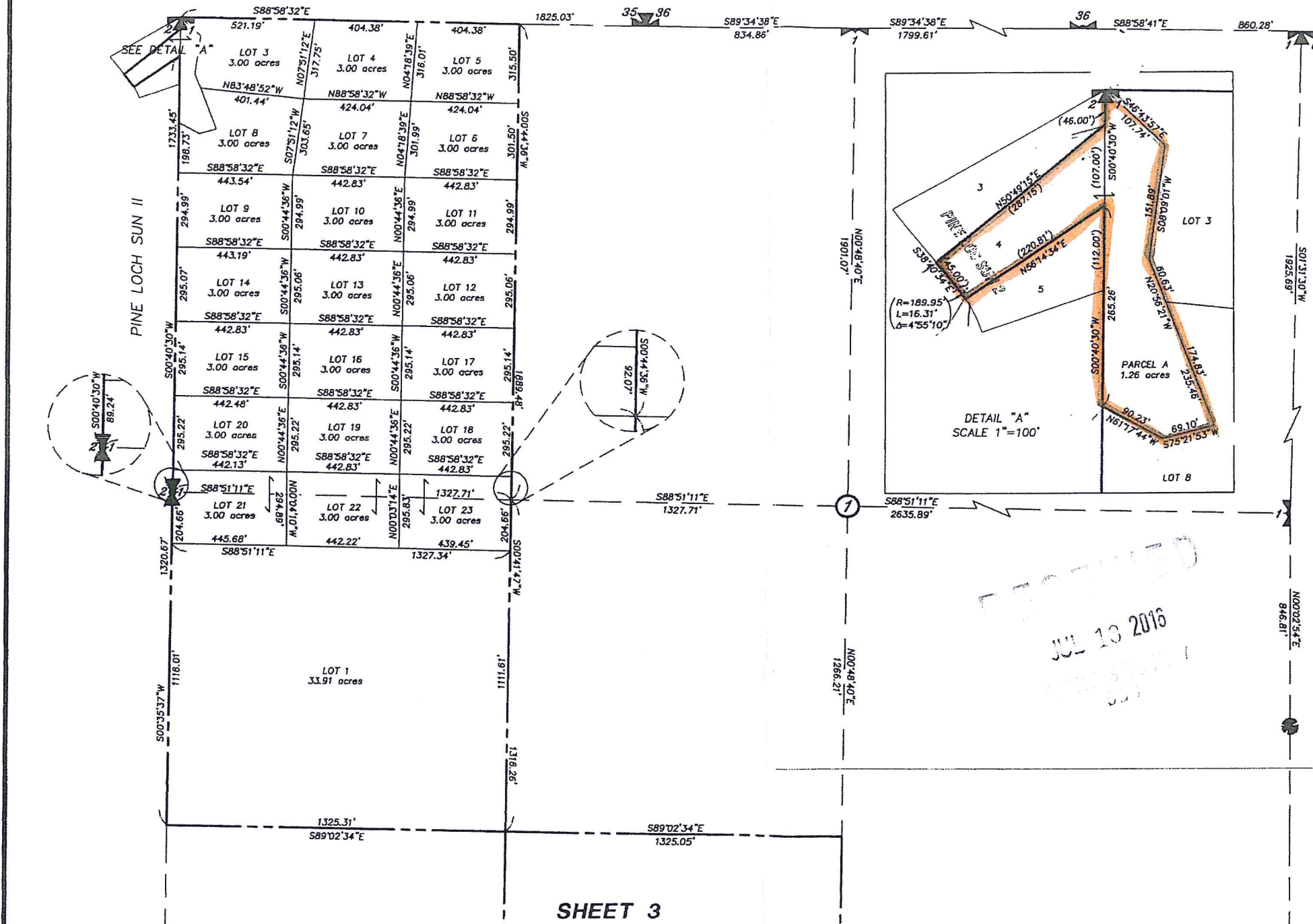
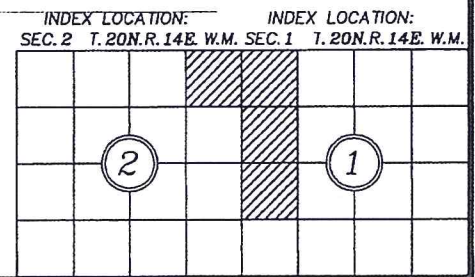
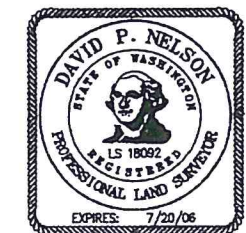


BOUNDARY LINE ADJUSTMENT

A PORTION OF SECTIONS 1 AND 2, TOWNSHIP 20 NORTH, RANGE 14 EAST, W.M., KITITAS COUNTY, WASHINGTON.



- LEGEND**
- SECTION CORNER COMMON TO FOUR SECTIONS.
 - QUARTER CORNER COMMON TO TWO SECTIONS
 - SECTION CORNER COMMON TO ONE SECTION
 - QUARTER CORNER COMMON TO ONE SECTION
 - C/O TREE ON LINE
 - SET 1/2" REBAR
 - FND REBAR
 - PLATTED DISTANCE
 - SECTION LINE



RECORDER'S CERTIFICATE 2006.04.170033
 Filed for record this 17 day of April 2006 at 11:41AM in book 92 of SURVEYS at page 135 at the request of
 DAVID P. NELSON
 Surveyor's Name
 JERALD V. PETTIT
 County Auditor

SURVEYOR'S CERTIFICATE
 This map correctly represents a survey made by me or under my direction in conformance with the requirements of the Survey Recording Act at the request of PINE TREE L.L.C. in APRIL, 2006.
 DAVID P. NELSON
 DATE 04/14/06
 Certificate No. 18092

Encompass
 ENGINEERING & SURVEYING
 108 EAST 2ND STREET
 CLE ELUM, WA 98922
 PHONE: (509) 674-7433
 FAX: (509) 674-7419

BOUNDARY LINE ADJUSTMENT
 PREPARED FOR
 PINE TREE L.L.C.
 A PORTION OF SECTIONS 1 AND 2,
 TOWNSHIP 20 NORTH, RANGE 14 EAST, W.M.,
 KITITAS COUNTY WASHINGTON

DWN BY T. ROLETTO	DATE 04/2006	JOB NO. 05539
CHKD BY D. NELSON	SCALE 1"=300'	SHEET 2 OF 4